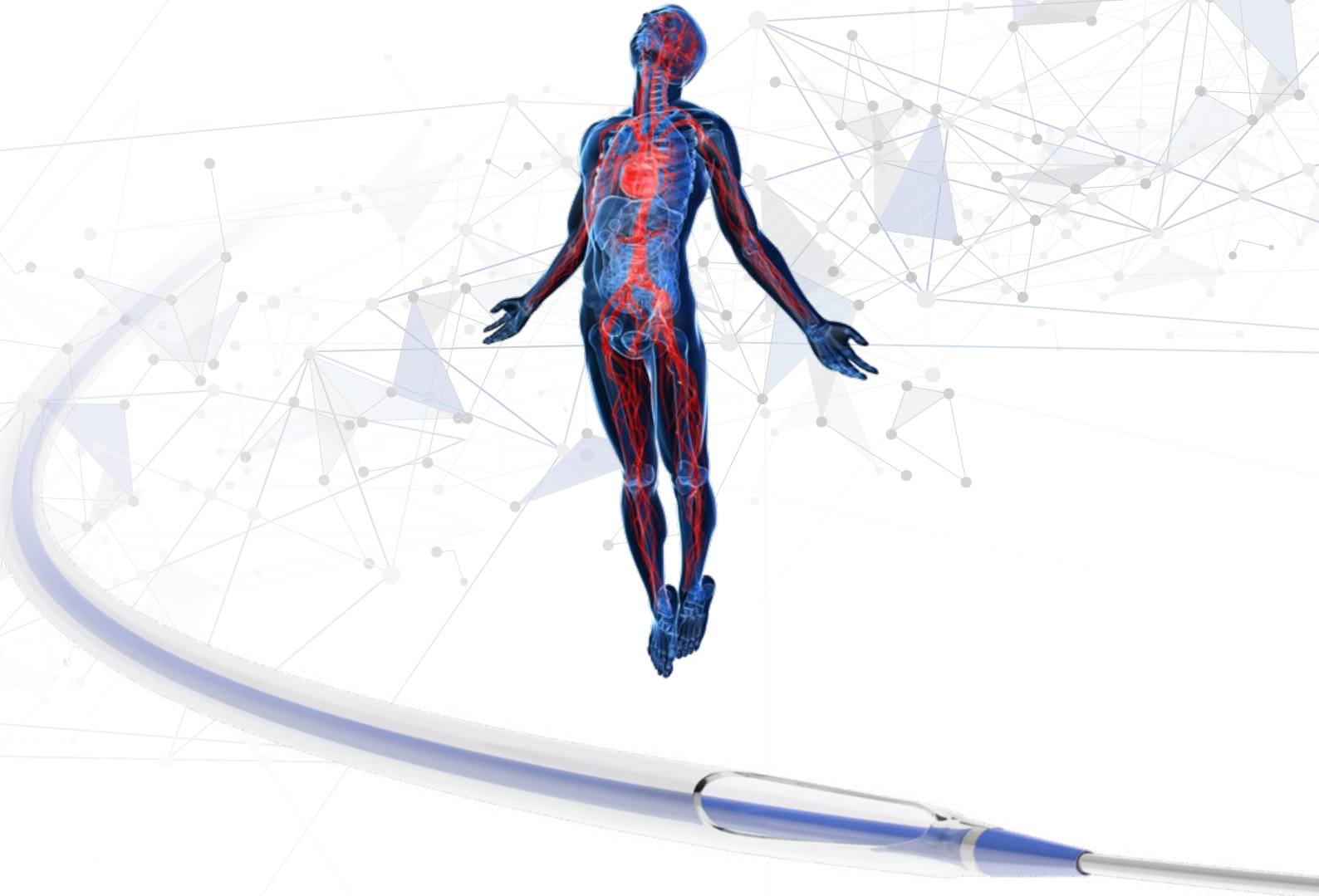
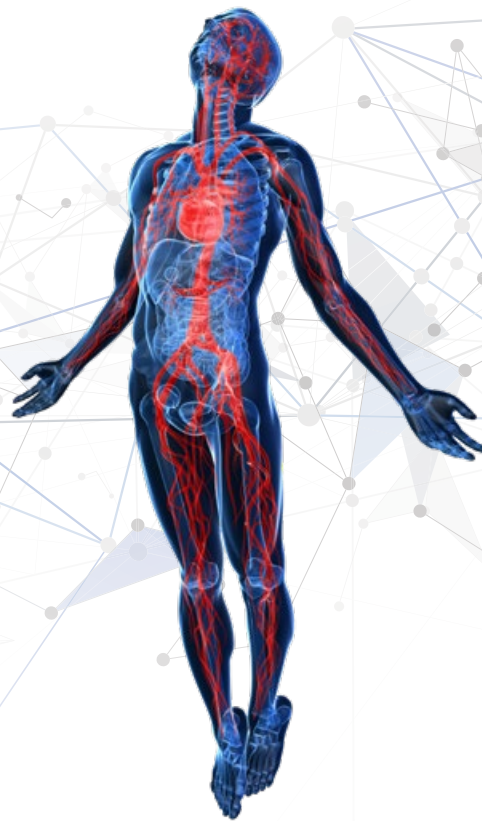




VX^{6F}
Aspiration Catheter



An efficient and effective solution
for thrombus removal

Up To **6F**

The **VX^{6F}** Aspiration Catheter is designed to provide an **efficient** and **effective** solution for thrombus removal. Offering excellent **trackability, pushability, and aspiration volume.**

DELIVERY SYSTEM

- > **Pre-loaded Stylet** provides improved pushability and kink resistance, ensuring optimal catheter delivery in tortuous paths
- > **Smooth Catheter** provides excellent flexibility and luminal volume
- > **Hydrophilic Coating** allows for easy navigation through tortuous anatomy

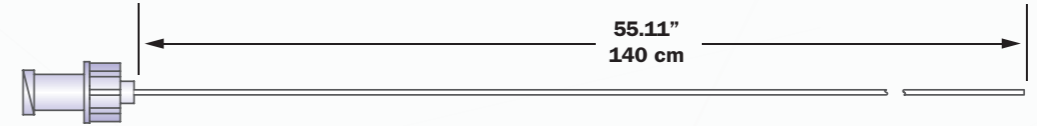
ASPIRATION VOLUME

- > **Large Extraction Lumen** due to shaft construction, ensures optimal aspiration rates
- > **Short Tip Design** for deliverability and increased safety during aspiration procedure
- > **Large Aspiration Port** allows for a higher rate of aspiration and increased aspiration volume

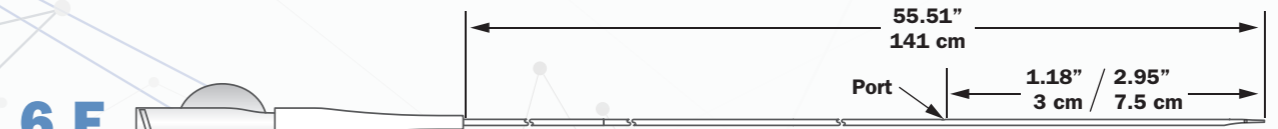
TECHNICAL SPECIFICATIONS

INNER	Calculation of Port Area	Diagram	OUTER	Calculation of Port Area	Diagram
	Guidewire	0.36 mm (0.014")		Guidewire	0.36 mm (0.014")
	Rapid Exchange (RX)	75 mm (2.95")		Rapid Exchange (RX)	75 mm (2.95")
	Working Length	141cm (55.51")		Working Length	135 cm (53.15")
	Catheter Type	Non-Braided		Catheter Type	Non-Braided
	Max. Outer Diameter Distal	1.42 mm (0.056")		Max. Outer Diameter Distal	1.75 mm (0.069")
	Inner Diameter (I.D.)	1.10 mm (0.043")		Inner Diameter (I.D.)	1.10 mm (0.043")
	Aspiration Port Opening	4.8mm (0.189")		Aspiration Port Opening	4.8mm (0.189")
	Entry Tip Diameter	>0.40 mm <0.50 mm		Entry Tip Diameter	>0.40 mm <0.50 mm
	Aspiration Area (Cath. Cross Section)	0.95 mm ²		Aspiration Area (Cath. Cross Section)	0.95 mm ²
	Radiopaque Marker Band (Distance Tip to Marker)	3.5 mm (0.14")		Radiopaque Marker Band (Distance Tip to Marker)	3.5 mm (0.14")

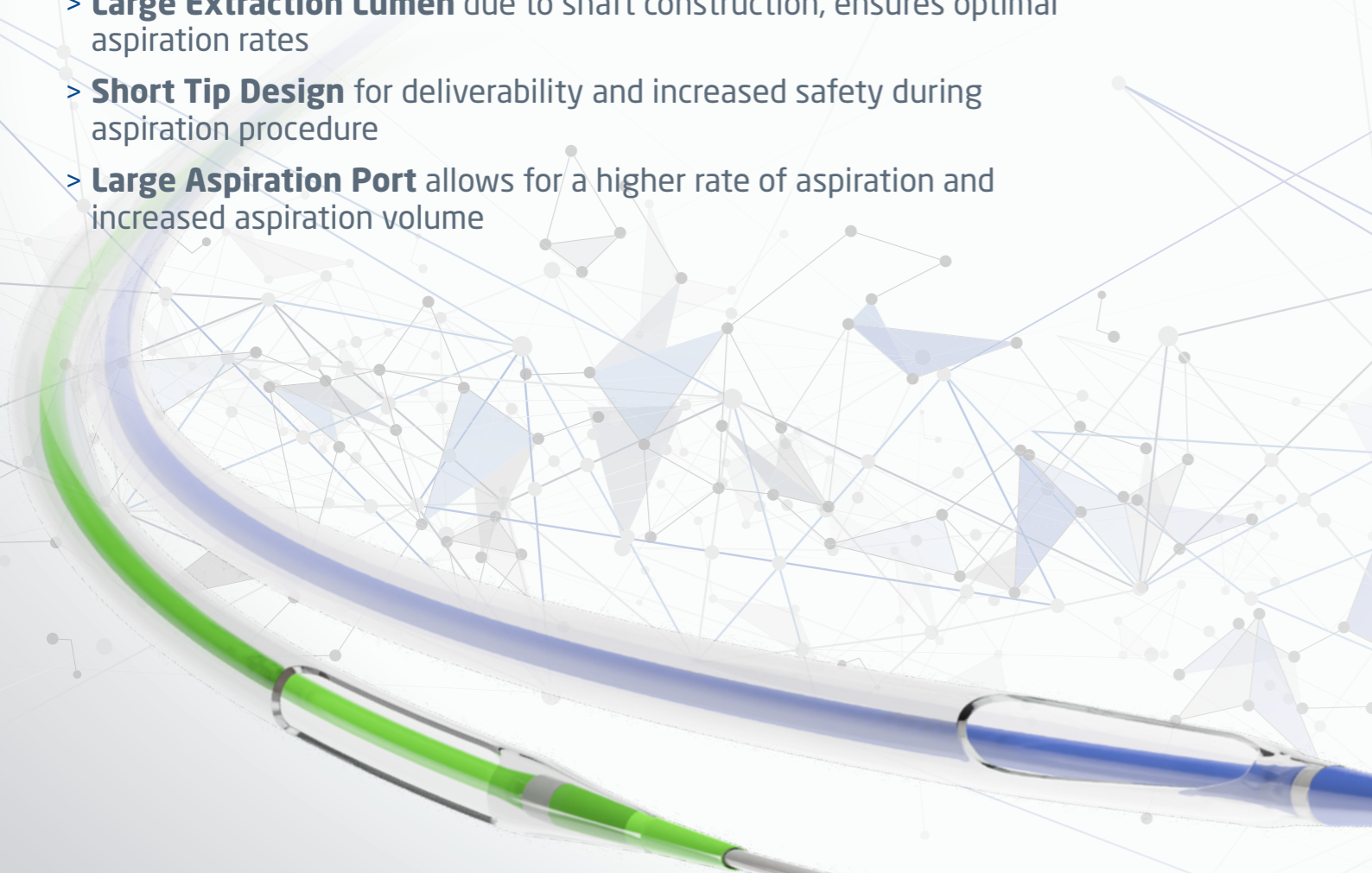
Stylet



INNER



OUTER



The VX^{6F} Aspiration Catheter is a **rapid exchange** type catheter used for the **removal of thrombus and debris** in the coronary or peripheral arteries via percutaneous suction.

TECHNICAL SPECIFICATIONS

Description	Rapid Exchange Aspiration Catheter
Recommended Guidewire	0.014"
Recommended Guiding Catheter	6 F
Recommended Guiding Sheath	Compatible with 5 F sheath Minimum sheath ID 1.80 mm
Rapid Exchange Segment	30 75 mm
Tip Entry Profile	min 0.40 mm
Coating	Hydrophilic coating present on distal shaft 260 mm (10.23")

Please refer to more technical specifications inside

ADDITIONAL FEATURES

Strain Relief Guard	Provides ease of pushability and prevents kinking
New Advanced Proximal Shaft Catheter	Supports tortuous anatomy – 300 mm strengthening of the proximal tube for more proximal stiffness

COMPONENTS INCLUDED

Components	<ul style="list-style-type: none"> • 30 ml polycarbonate locking syringes (x2) • Extension line with stopcock (x1) • 40 µm filter basket (x1)
-------------------	--

ORDER INFORMATION

Product code	Configuration	Item	Rapid-Exchange Length (mm) ± 3	Usable Catheter Length (cm)
VX6H05	Outer	Set*	75	135
VX6HI3	Inner	Set*	30	136.5
VX6HI5	Inner	Set*	75	141
VX6H05B	Outer	Bare	75	135
VX6HI3B	Inner	Bare	30	136.5
VX6HI5B	Inner	Bare	75	141